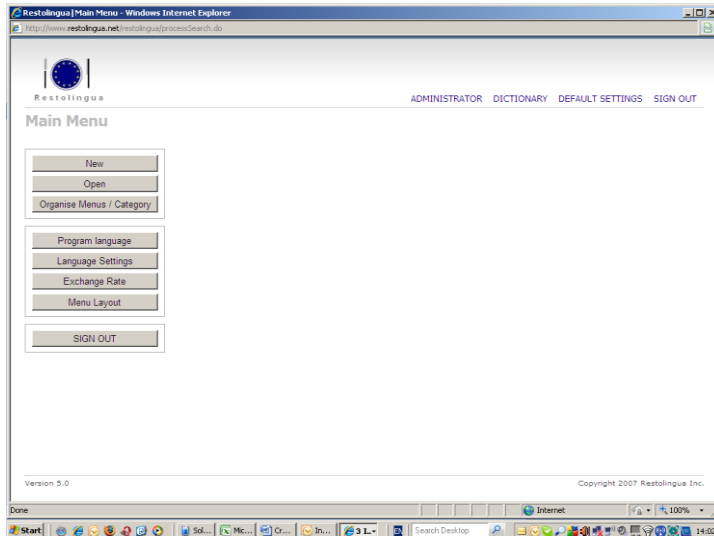


## CREATING A MENU

### NEW

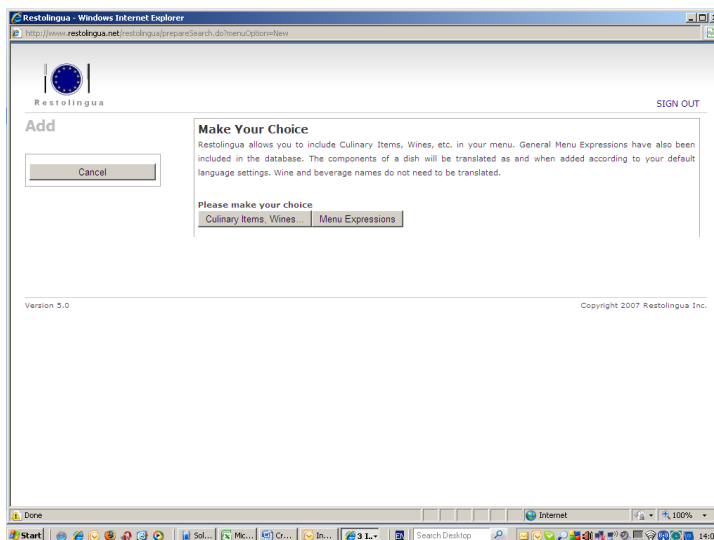
With this function you can create a new menu. You will go directly to the window in which you can create a new menu.



### MAKE YOUR CHOICE

Restolingua makes a difference between Culinary Items and Menu Expressions. Menu Expressions are all these expressions and/or explanations on a menu that have nothing to do with food, such as: Closed on Monday, This Menu is not served at dinner, Personal checks are not accepted, etc.

To create a menu you will logically start with the Culinary Items (Starters, Salads, Meat Dishes, Fish Dishes, Desserts, etc). When the menu is finished, then you will add the Menu Expressions and the formatting possibilities.

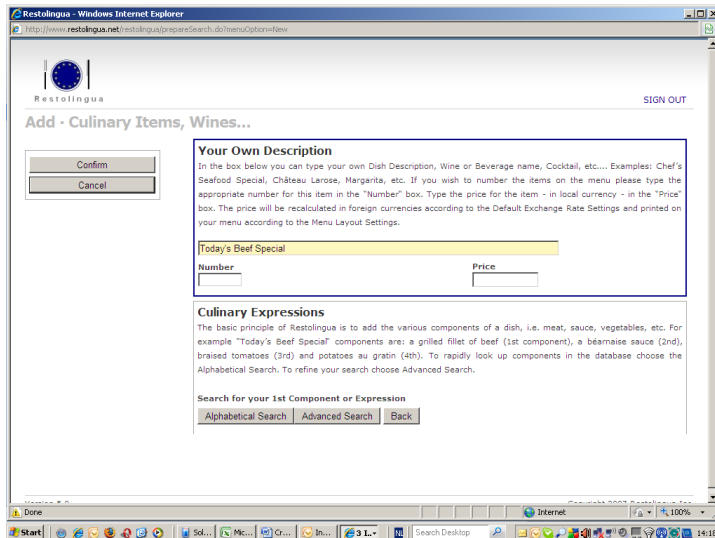


The basics of RESTOLINGUA will be illustrated by a number of examples.

A menu consists of Your Own Description, the Restolingua menu item, a menu number (optional) and a price (also optional).

## YOUR OWN DESCRIPTION

Your Own Dish Description (the so-called 'poetic name'), for example **"Today's Beef Special"**.



Type your menu item: 'Today's beef special'.

Type your item's menu number (optional).

Type the price in your local currency (optional); the price will automatically be calculated in different foreign currencies according to the settings.

## RESTOLINGUA MENU ITEM

The Restolingua Menu Item is a technical description of your menu item on which the translation is based. The basic principle of Restolingua resides in the addition of the different components of which a dish consists (meat, a sauce, vegetables, potatoes).

Therefore you have to know the composition of a menu item before translating it.

### OUR EXAMPLE:

For example, **'Today's Beef Special'** consists of a grilled fillet of beef, a béarnaise sauce, braised tomatoes and a portion of potatoes au gratin.

After a selection of different components from the database, the Restolingua menu item will become: **Grilled Fillet of Beef, Béarnaise Sauce, Braised Tomatoes, Potatoes au Gratin.**

These items will then be translated according to the language settings.

## SEARCH CRITERIA

Every database item has been indexed according to the following search criteria:

### Major Group, Category, Cooking Method.

A Major Group and a Category have been defined for each item in the database.  
For Example: Meat dishes are a Major Group and Beef is a specific Category.

Cooking Method is an additional index and specifies the search criteria.

There are two ways to look up Restolingua menu items.

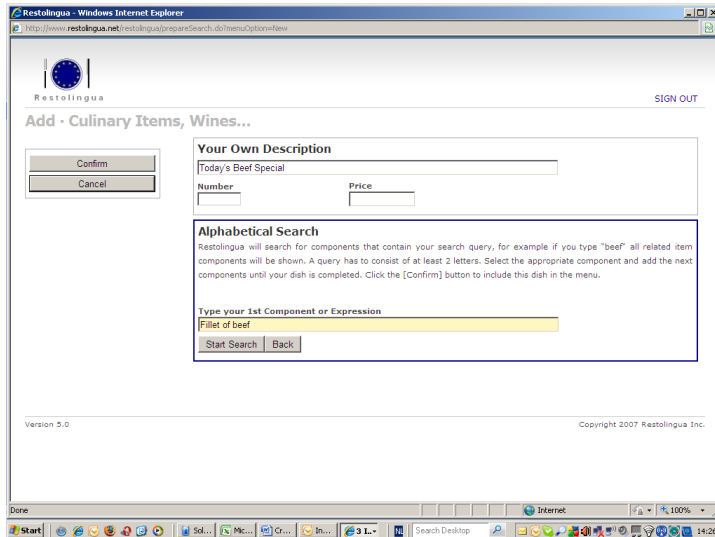
#### 1. ALPHABETICAL SEARCH:

To rapidly look up a certain item in the database, choose “Alphabetical Search”.

#### 2. ADVANCED SEARCH:

If Restolingua gives too many items with the “Alphabetical Search” method you can specify by means of an advanced search.

As explained above, items always have two indexes: **Major Group** and **Category**. The principle is that by choosing a Major Group (e.g. ‘meat’) the choice of Category is narrowed down to groups belonging to that Major Group (in the case of the Major Group ‘meat’: beef, pork, lamb, etc.). If you select ‘fish’ as a Major Group only the fish Category group will be shown. You can narrow the search criteria even more by selecting additional indexes.



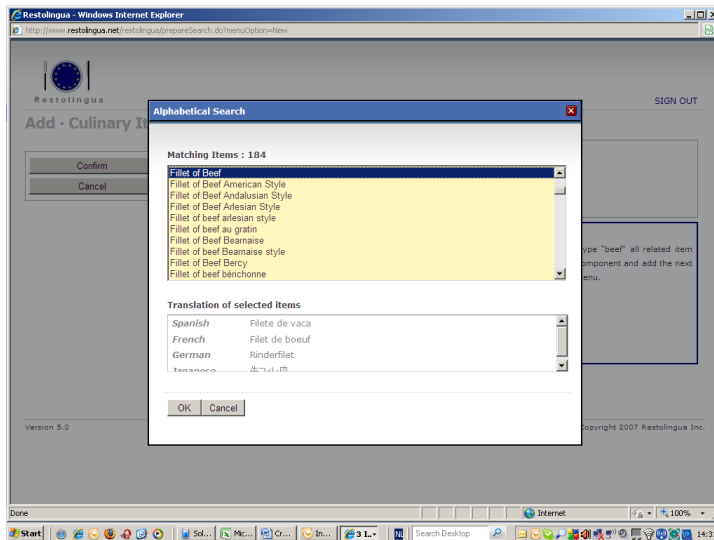
#### OUR EXAMPLE:

Click Alphabetical Search

Enter ‘Fillet of beef’ below ‘Type your 1st Component or Expression’.

Click ‘Start Search’.

The search dialog box will appear with the number of matching items.



Use the scroll arrows to search for the item 'Fillet of beef'. If the number of matching items is too big, choose 'Cancel' and the button 'Back'. Next you choose 'Advanced search' and specify the search criteria.

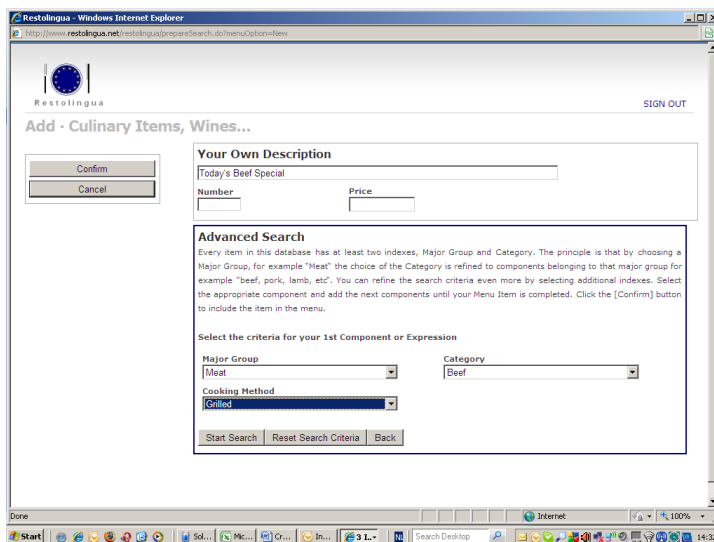
OUR EXAMPLE:

Choose 'Major group' and select 'Meat'.

Choose 'Category' and select 'Beef'.

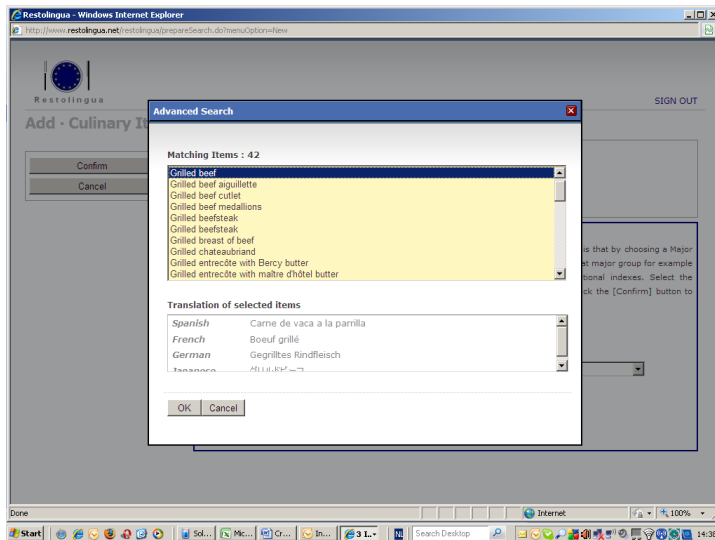
Choose 'Cooking method' and select 'Grilled'.

Click 'Start Search'.



The advanced search dialog box will appear with only those items that match the search criteria.

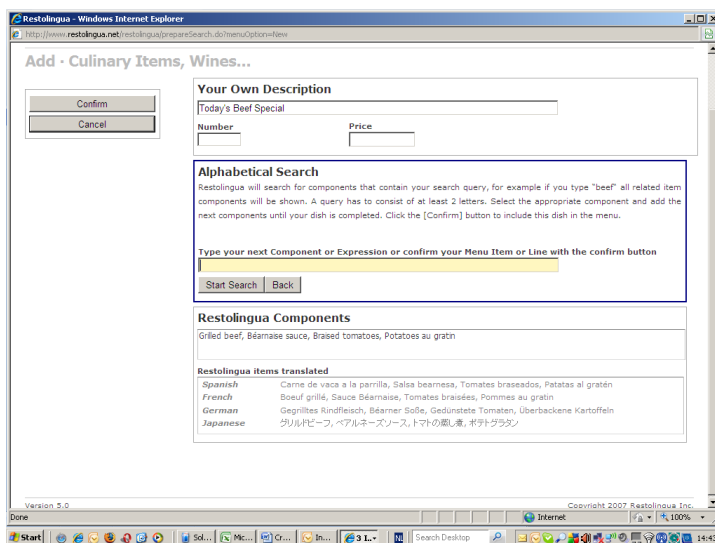
In the 'Translation of selected items' box you may find the different translations. When a certain item is shown more than once in the search window, it means there are several translations.



Select the item that matches your criteria and click 'OK'.

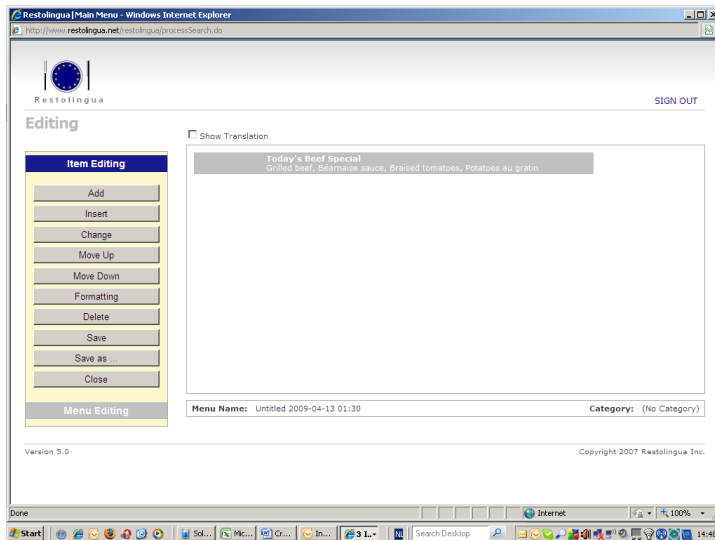
Your selected item will appear in the Restolinguia Components box.

Add the next component until your Menu Item is complete: béarnaise sauce, braised tomatoes and potatoes au gratin. These items will also be added to the Restolinguia Components box, all separated by commas: **Grilled Fillet of Beef, Béarnaise Sauce, Braised Tomatoes, Potatoes au Gratin.**

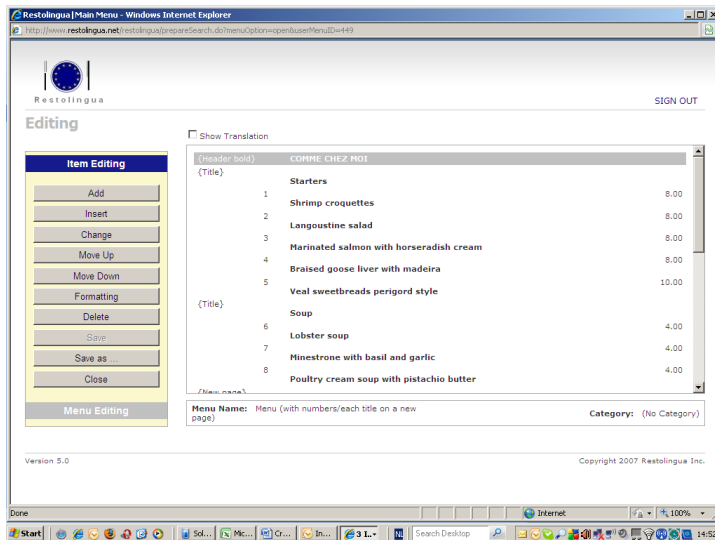


Click the 'Confirm' button to include the item in the Menu. The Menu Editing window will appear.

Click the 'Add' button to add the next menu item and repeat the steps above.



After adding all your menu items as described above you will see a list of all menu items in the Menu Editing window.



To save the menu, choose 'Save'. All menus are saved with the .MNU extension.

To create a new menu or open an existing one, choose 'Close' followed by 'New' or 'Open'.

Choose 'Sign Out' to quit the program.