

MENU LAYOUT

Restolingua makes a difference between Item Editing and Menu Editing. Item Editing is the formatting of a single menu item, whereas Menu Editing influences the whole menu.

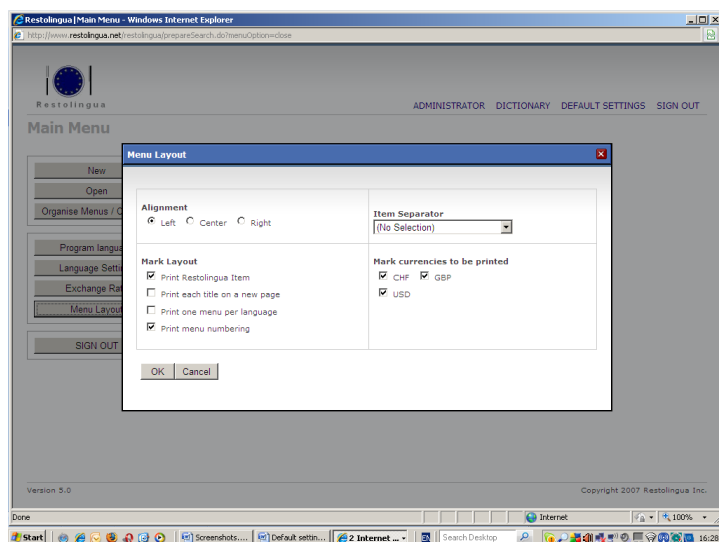
Menu Editing

Menu layout

Select 'Menu Layout'. Changing the settings will affect the currently selected menu only. The default settings remain unchanged (refer to chapter 'Default Settings').

Alignment:

Your menu can be aligned in three ways: left, center or right. Left alignment: the number and text will be printed on the left side, the price on the right side. Center or right alignment: the menu item will be printed in the middle or on the right side, the price under the menu item.



Mark Layout

Print Restolingua Item:

A menu item block consists of "Your Own Description", the Restolingua menu item and one or more translations. For obvious reasons this option is always switched ON (when this option is switched off, the Restolingua menu item will not be printed).

Print each title on a new page:

Print each group of related menu items (classified by a title, Starter, Main Dish, etc.) on a new page.

Print one menu per language:

Print one menu per language: only "Your Own Description", the Restolingua Item (see above) together with the translation will be printed.

Print menu numbering:

Your menu item number, if filled out, will be printed on the left side of your menu in front of the menu item.

Item Separator:

Menu items can be separated by symbols. Clicking the down arrow opens a list with possible separators. Select the desired symbol. This option is especially useful for banquet menus.

Mark currencies to be printed:

Specify the currencies to be printed on the menu.

Buttons:

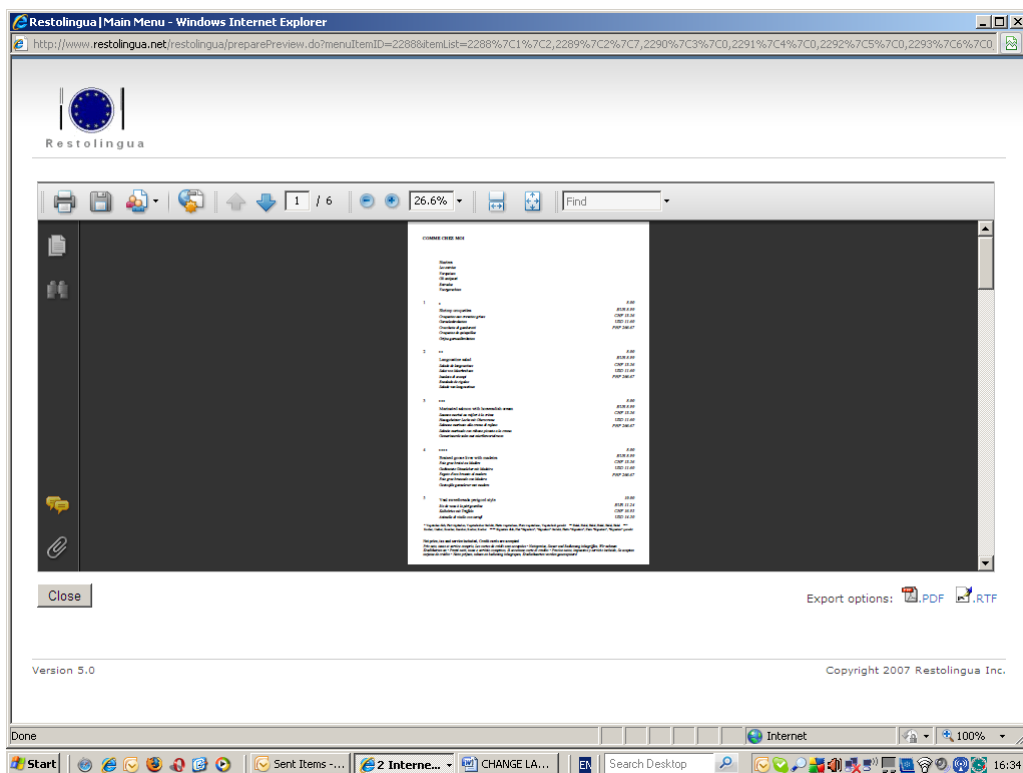
CHOOSE **TO**

OK Save the settings.

Cancel Leave the dialog box without changing the settings.

Add an Item Comment

Many restaurants have signature dishes or vegetarian dishes, etc. Restolingua gives you the possibility to add these types of comments to your dishes. We call this Item Comment.



On the menu a star will indicate that this dish is a special dish. At the end of every page of the menu an explanation appears which tells you what a one star dish means, a two star dish, etc.

For example:

Vegetarian Dish	*
Halal	**
Kosher	***
Signature Dish	****
Chef's recommendation	*****
Spicy	*****
Chef's Special	*****
Special of the House	*****

