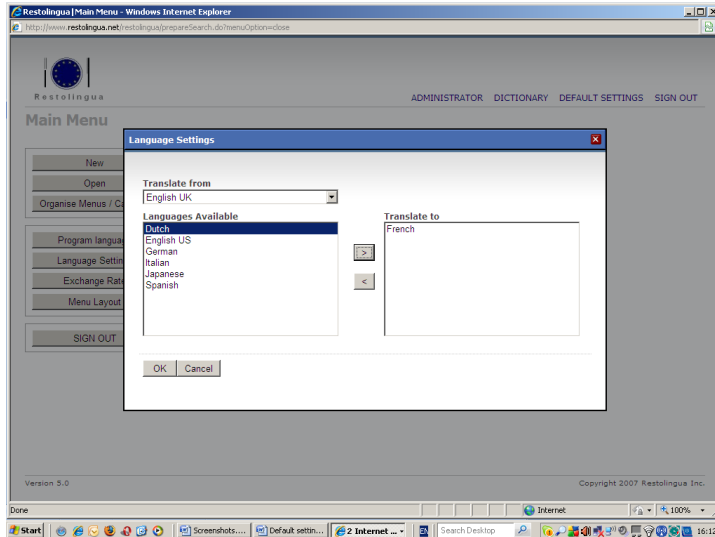




## Language Settings

Changing Language Settings while not editing a new or existing menu will affect the default settings. Changing Language Settings while editing a new or existing menu will not affect the default settings.



### Translation from:

This box displays the default language. This is the language used to search for the menu items. Changing the language to translate from only affects the current Restolingua session.

### Languages Available:

This list displays the available languages.

### Translate To:

This list displays the languages to translate to.

### Buttons:

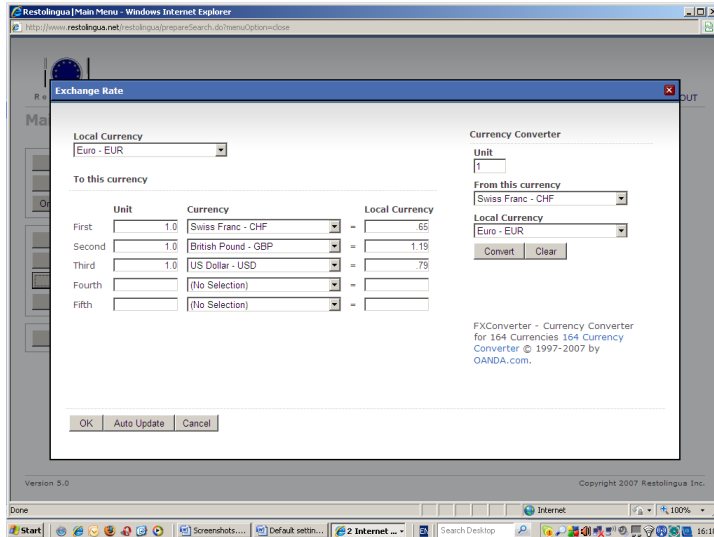
#### CHOOSE TO

---

- > Add a language from the **Languages Available** box to the **Translate To** box. You may choose more than one language from the **Languages Available** box and translate your menu into several languages simultaneously!
- < Remove the selected language from the **Translate To** box.
- OK** Save the settings.
- Cancel** Leave the dialog box without changing the settings.

## Exchange Rate

Changing settings will affect all menus. As soon as an existing menu is opened, all currencies will be recalculated automatically according to the current rate. When defining currencies and exchange rates, prices will be automatically calculated for the given currencies.



### Local Currency

First, enter the symbol of the local currency. You can also select the currency from the list. Click the down arrow and select the desired symbol.

### To this currency

Next, enter the symbols of the other currencies by clicking on the down arrow.

### Auto Update

Next, choose the Auto Update button to calculate all currencies

To remove a currency, erase the symbol.

### Buttons:

#### CHOOSE      TO

**OK**              Save the settings.

**Auto Update**      Automatically calculate the foreign currencies

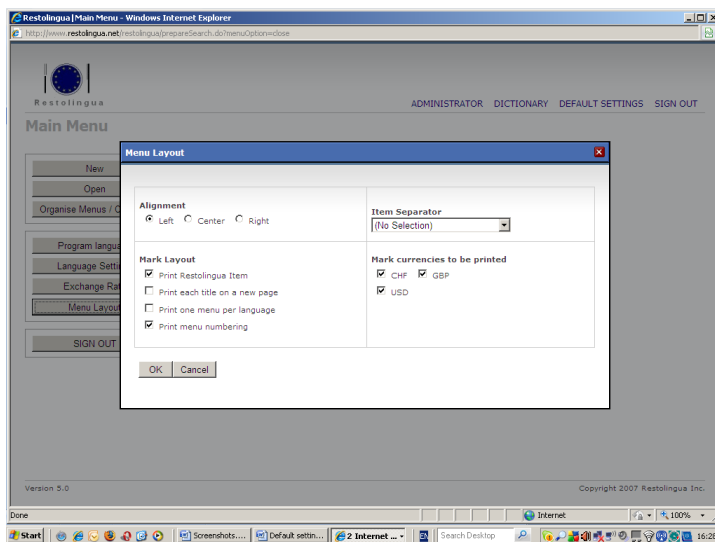
**Cancel**            Leave the dialog box without saving the settings.

## Menu layout settings

Changing settings while not editing a new or existing menu will affect the default settings. Changing settings while editing a new or existing menu will not affect the default settings.

### Alignment:

Your menu can be aligned in three ways: left, center or right. Left alignment: the number and text will be printed on the left side, the price on the right side. Center or right alignment: the menu item will be printed in the middle or on the right side, the price under the menu item.



### Mark Layout

#### Print Restolingua Item:

A menu item block consists of "Your Own Description", the Restolingua menu item and one or more translations. For obvious reasons this option is always switched ON (when this option is switched off, the Restolingua menu item will not be printed).

#### Print each title on a new page:

Print each group of related menu items (classified by a title, Starter, Main Dish, etc.) on a new page.

#### Print one menu per language:

Print one menu per language: only "Your Own Description", the Restolingua Item (see above) together with the translation will be printed.

#### Print menu numbering:

Your menu item number, if filled out, will be printed on the left side of your menu in front of the menu item.

#### Item Separator:

Menu items can be separated by symbols. Clicking the down arrow opens a list with possible separators. Select the desired symbol. This option is especially useful for banquet menus.

#### Mark currencies to be printed:

Specify the currencies to be printed on the menu.

#### Buttons:

**CHOOSE** \_\_\_\_\_ **TO**

**OK** Save the settings.

**Cancel** Leave the dialog box without changing the settings.